



Greater Las Vegas Association of REALTORS® November 2015 Statistics



	Single Family Residential Units			Condo/Townhouse Units		
	Nov 15	Change from Oct 15	Change from Nov 14	Nov 15	Change from Oct 15	Change from Nov 14
AVAILABILITY AT END OF PERIOD						
# of available units listed	13,169	-1.6%	-1.9%	3,391	-1.4%	-3.9%
Median list price of available units	\$ 239,900	-0.9%	+7.6%	127,000	+5.8%	+17.6%
Average list price of available units	\$ 352,001	-1.3%	+8.7%	235,701	-0.6%	+4.6%
*AVAILABILITY AT END OF PERIOD	Nov 15	Change from Oct 15	Change from Nov 14	Nov 15	Change from Oct 15	Change from Nov 14
# of available units listed w/o offers	7,772	-4.5%	-5.2%	2,282	-1.3%	-7.2%
Median list price of available units w/o offers	\$ 269,997	-1.8%	+8.2%	\$ 134,950	+3.9%	+19.5%
Average list price of available units w/o offers	\$ 421,400	-1.2%	+10.2%	\$ 272,131	-2.3%	+2.6%
NEW LISTINGS THIS PERIOD	Nov 15	Change from Oct 15	Change from Nov 14	Nov 15	Change from Oct 15	Change from Nov 14
# of new listings	2,672	-26.9%	+5.0%	729	-11.7%	+3.0%
Median price of new listings	\$ 239,000	-0.4%	+8.7%	\$ 134,900	+8.0%	+13.6%
Average price of new listings	\$ 310,403	-4.6%	+9.7%	\$ 195,567	-2.8%	-0.4%
UNITS SOLD THIS PERIOD	Nov 15	Change from Oct 15	Change from Nov 14	Nov 15	Change from Oct 15	Change from Nov 14
# of units sold	1,973	-27.5%	-2.9%	503	-10.8%	+11.3%
Median price of units sold	\$ 220,000	+0.0%	+8.9%	\$ 116,000	-2.5%	+4.1%
Average price of units sold	\$ 268,785	+4.5%	+10.4%	\$ 160,968	+10.8%	+11.6%
TIME ON MARKET FOR UNITS SOLD THIS PERIOD	Nov 15	Sep 15	Oct 14	Nov 15	Sep 15	Oct 14
0-30 days	46.5%	49.4%	47.0%	46.5%	45.2%	43.1%
31-60 days	21.7%	19.0%	20.1%	17.7%	18.6%	21.2%
61-90 days	11.6%	12.3%	11.9%	10.7%	10.3%	13.1%
91-120 days	6.5%	7.4%	6.2%	6.8%	8.2%	7.7%
121+ days	13.7%	11.9%	14.8%	18.3%	17.7%	14.8%
TOTAL HOME SALES DOLLAR VALUE FOR UNITS SOLD THIS PERIOD	Nov 15	Change from Oct 15	Change from Nov 14	Nov 15	Change from Oct 15	Change from Nov 14
	\$ 530,312,620	-24.2%	+7.3%	\$ 80,966,667	-1.2%	+24.2%

***This category reflects the existing market availability of listings without pending or contingent offers.**

Source: Greater Las Vegas Association of REALTORS®

For media inquiries, please call George McCabe, with B&P Public Relations, at (702) 325-7358.

DISCLAIMER: This data is based on information from the Greater Las Vegas Association of REALTORS® (GLVAR) Multiple Listing Service (MLS). This information is deemed reliable but is not guaranteed. MLS collects, compiles and distributes information about homes listed for sale by its subscribers who are real estate agents. MLS subscription is available to all real estate agents licensed in Nevada, but is not available to the general public. Not all licensed agents subscribe to the MLS. MLS does not include all new homes available or listings from non-MLS agents, nor does it include properties for sale by owner. The territorial jurisdiction of the GLVAR as a member of the National Association of REALTORS® includes Clark, Nye, Lincoln and White Pine Counties, Nevada, and such other areas as from time to time may be allocated to the GLVAR by the Board of Directors of the National Association of REALTORS®.



Greater Las Vegas Association of REALTORS® October 2015 Statistics

Sold Units Statistics by Area (see map)

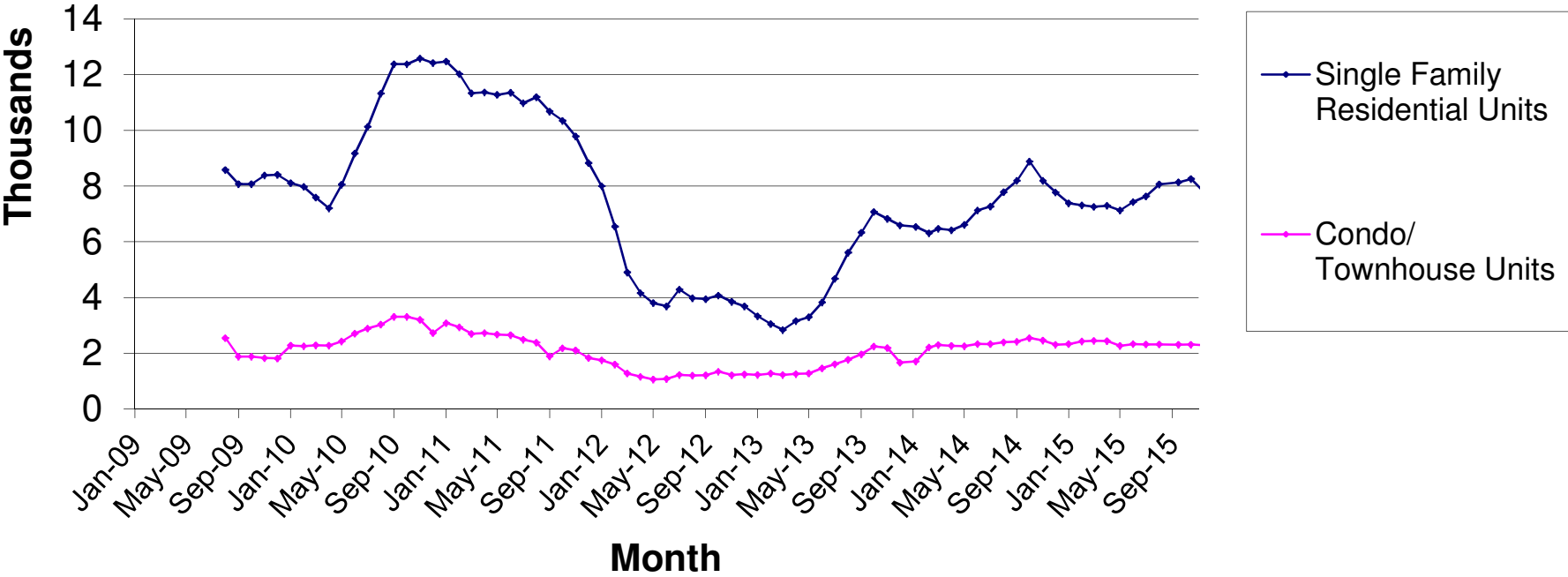
Area	Single Family Residential Units			Condo/Townhouse Units		
	# of units sold	Median Sold Price	Average Sold Price	# of units sold	Median Sold Price	Average Sold Price
101 - North	21	\$110,000	\$101,738	2	\$78,500	\$78,500
102 - North	133	\$247,000	\$287,656	3	\$110,000	\$117,667
103 - North	204	\$185,500	\$200,364	8	\$83,700	\$101,006
201 - East	33	\$91,500	\$108,133	21	\$259,900	\$269,800
202 - East	49	\$128,000	\$132,130	16	\$57,194	\$58,687
203 - East	41	\$165,000	\$176,765	9	\$55,500	\$67,111
204 - East	85	\$155,000	\$162,109	16	\$75,250	\$83,875
301 - South	48	\$145,500	\$155,228	54	\$126,500	\$171,260
302 - South	53	\$175,000	\$210,176	40	\$96,250	\$242,513
303 - South	102	\$225,000	\$275,311	16	\$154,000	\$144,500
401 - North West	11	\$153,070	\$230,431	5	\$63,500	\$73,080
402 - North West	86	\$153,000	\$163,534	20	\$88,900	\$87,100
403 - North West	51	\$200,000	\$229,262	38	\$90,000	\$98,003
404 - North West	83	\$296,000	\$416,561	24	\$210,500	\$479,479
405 - North West	153	\$220,000	\$249,913	26	\$123,000	\$124,273
501 - South West	33	\$275,000	\$277,873	10	\$92,500	\$93,550
502 - South West	99	\$300,000	\$478,085	19	\$100,000	\$116,737
503 - South West	77	\$240,000	\$277,709	84	\$125,000	\$149,324
504 - South West	100	\$219,000	\$252,556	6	\$101,950	\$100,467
505 - South West	97	\$269,000	\$320,397	4	\$135,500	\$142,225
601 - Henderson	23	\$237,000	\$538,677	9	\$119,750	\$115,917
602 - Henderson	69	\$249,000	\$279,651	21	\$130,000	\$127,647
603 - Henderson	35	\$230,000	\$250,554	10	\$119,950	\$130,610
604 - Henderson	31	\$215,000	\$256,755	2	\$109,125	\$109,125
605 - Henderson	52	\$227,000	\$242,170	12	\$111,000	\$115,225
606 - Henderson	133	\$355,000	\$430,092	20	\$207,750	\$205,500
701 - Boulder City	9	\$345,000	\$345,000	3	\$160,000	\$147,833
702 - Boulder City	1	\$575,000	\$575,000	2	\$357,500	\$357,500
800 - Mesquite	1	\$220,000	\$220,000	-	\$0	\$0
801 - Muddy River (Moapa, Glendale, Logandale, Overton)	3	\$270,000	\$270,000	-	\$0	\$0
802 - Mt. Charleston/Lee Canyon	3	\$330,000	\$330,000	-	\$0	\$0
803 - Indian Springs/Cold Creek	-	\$0	\$0	-	\$0	\$0
804 - Mountain Springs	-	\$0	\$0	-	\$0	\$0
805 - Blue Diamond	-	\$0	\$0	-	\$0	\$0
806 - State Line/Jean/Goodsprings	-	\$0	\$0	-	\$0	\$0
807 - Sandy Valley	-	\$0	\$0	-	\$0	\$0
808 - Laughlin	2	\$281,950	\$281,950	2	\$84,750	\$84,750
809 - Other Clark County	-	\$0	\$0	-	\$0	\$0
810 - Pahrump	29	\$155,000	\$155,000	-	\$0	\$0
811 - Nye County	1	\$135,000	\$135,000	-	\$0	\$0
812 - Lincoln County	1	\$127,500	\$127,500	-	\$0	\$0
813 - Other Nevada	-	\$0	\$0	-	\$0	\$0
814 - Amargosa Valley	-	\$0	\$0	-	\$0	\$0
815 - Beatty	-	\$0	\$0	-	\$0	\$0
816 - White Pine County	7	\$135,000	\$135,000	-	\$0	\$0
817 - Searchlight	-	\$0	\$0	-	\$0	\$0
900 - Outside Nevada	18	\$268,950	\$268,950	1	\$329,900	\$329,900

Source: Greater Las Vegas Association of REALTORS®

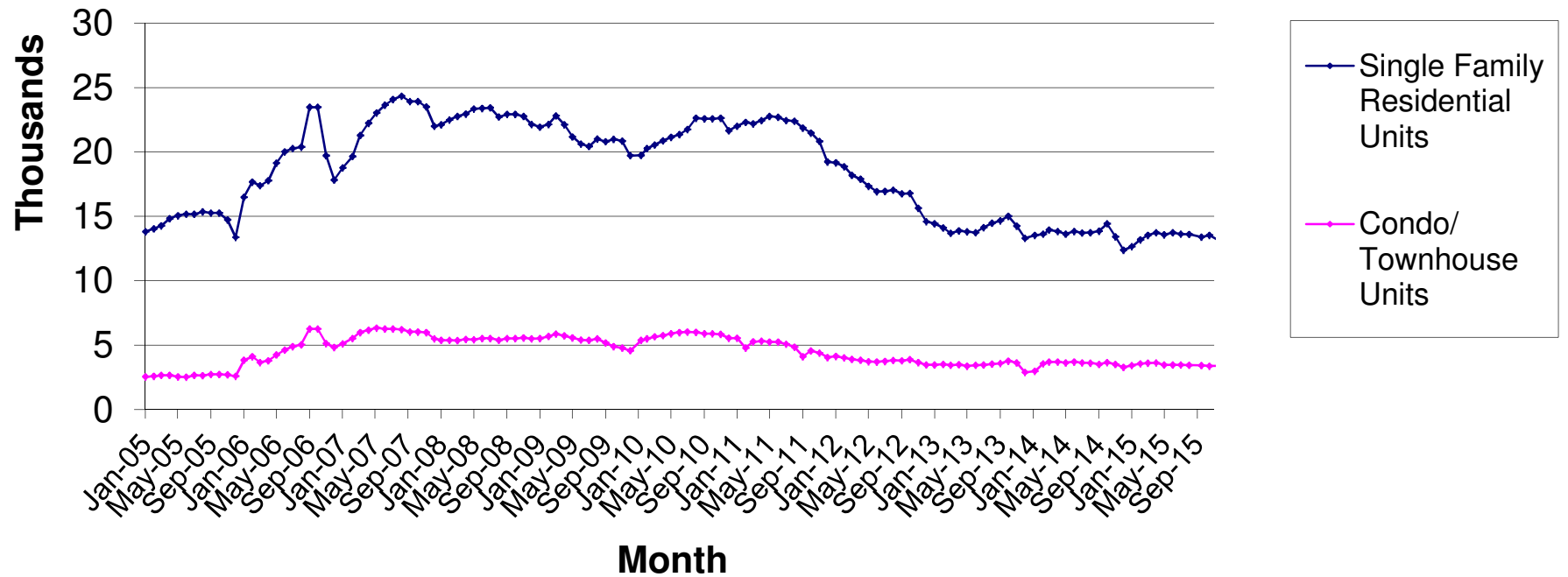
For media inquiries, please call George McCabe, B&P Public Relations, at (702) 325-7358.

DISCLAIMER: This data is based on information from the Greater Las Vegas Association of REALTORS® (GLVAR) Multiple Listing Service (MLS). This information is deemed reliable but is not guaranteed. MLS collects, compiles and distributes information about homes listed for sale by its subscribers who are real estate agents. MLS subscription is available to all real estate agents licensed in Nevada, but is not available to the general public. Not all licensed agents subscribe to the MLS. MLS does not include all new homes available or listings from non-MLS agents, nor does it include properties for sale by owner. The territorial jurisdiction of the GLVAR as a member of the National Association of REALTORS® includes Clark, Nye, Lincoln and White Pine Counties, Nevada, and such other areas as from time to time may be allocated to the GLVAR by the Board of Directors of the National Association of REALTORS®.

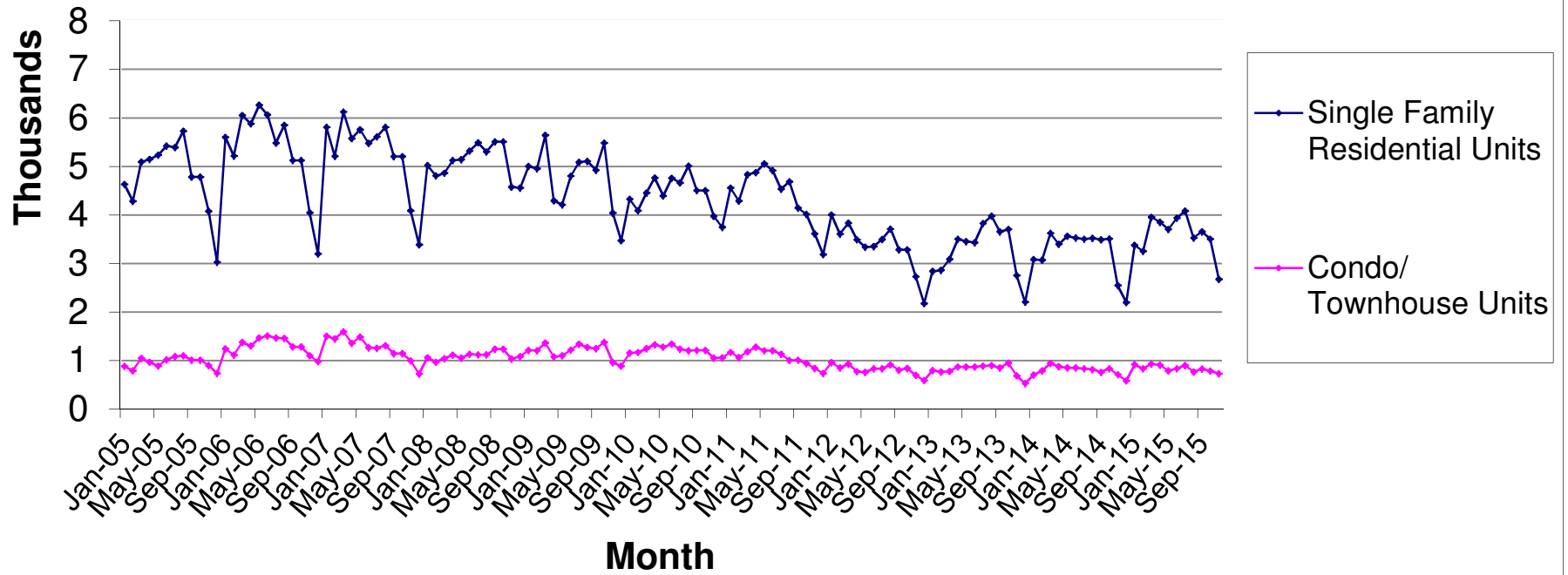
Availability Without Pending Or Contingent Offers End Of Period

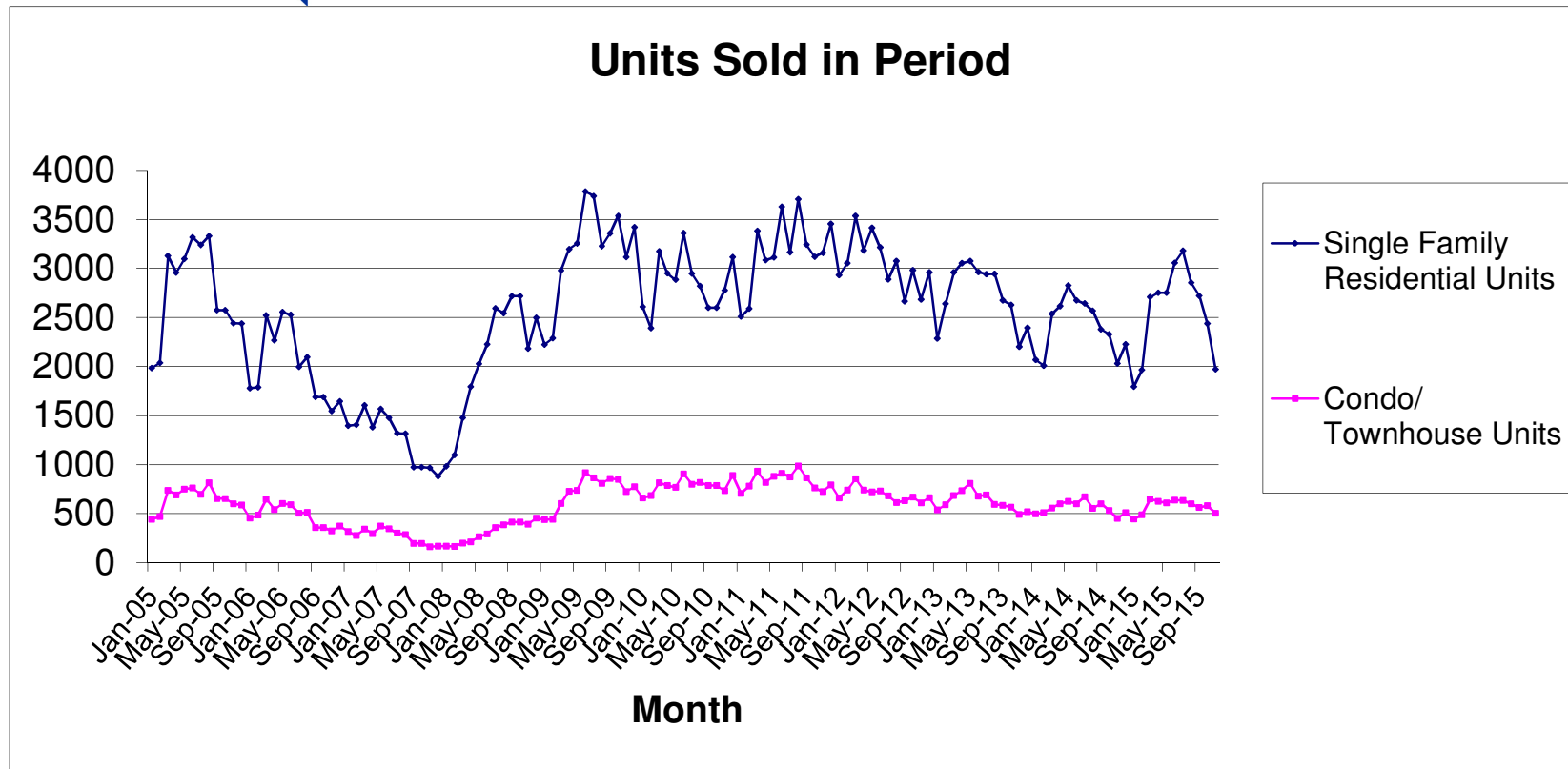


Availability at End of Period



Number of New Listings



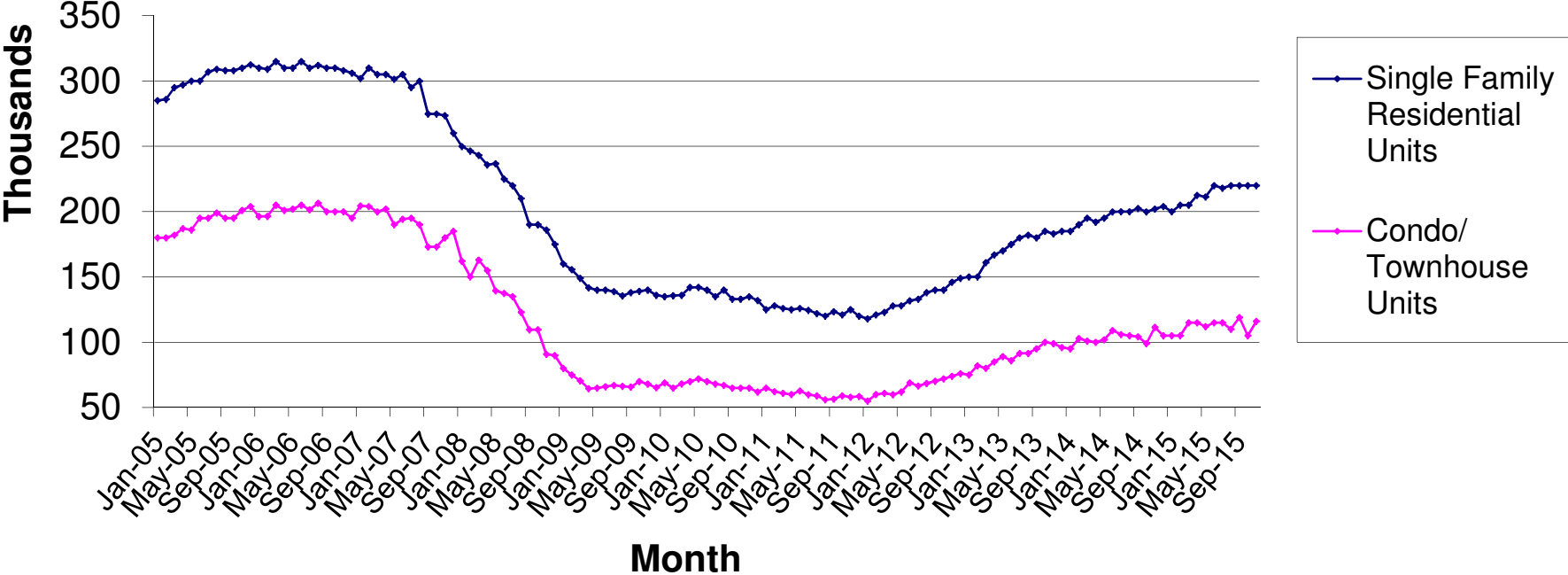


Source: Greater Las Vegas Association of REALTORS®

For media inquires, please call George McCabe, B&P Public Relations, at (702) 325-7358.

DISCLAIMER: This data is based on information from the Greater Las Vegas Association of REALTORS® (GLVAR) Multiple Listing Service (MLS). This information is deemed reliable but is not guaranteed. MLS collects, compiles and distributes information about homes listed for sale by its subscribers who are real estate agents. MLS subscription is available to all real estate agents licensed in Nevada, but is not available to the general public. Not all licensed agents subscribe to the MLS. MLS does not include all new homes available or listings from non-MLS agents, nor does it include properties for sale by owner. The territorial jurisdiction of the GLVAR as a member of the National Association of REALTORS® includes Clark, Nye, White Pine and Lincoln Counties, Nevada, and such other areas as from time to time may be allocated to the GLVAR by the Board of Directors of the National Association of REALTORS®.

Median Price of Units Sold in Period



Total Home Sales Value for Units Sold in Period

